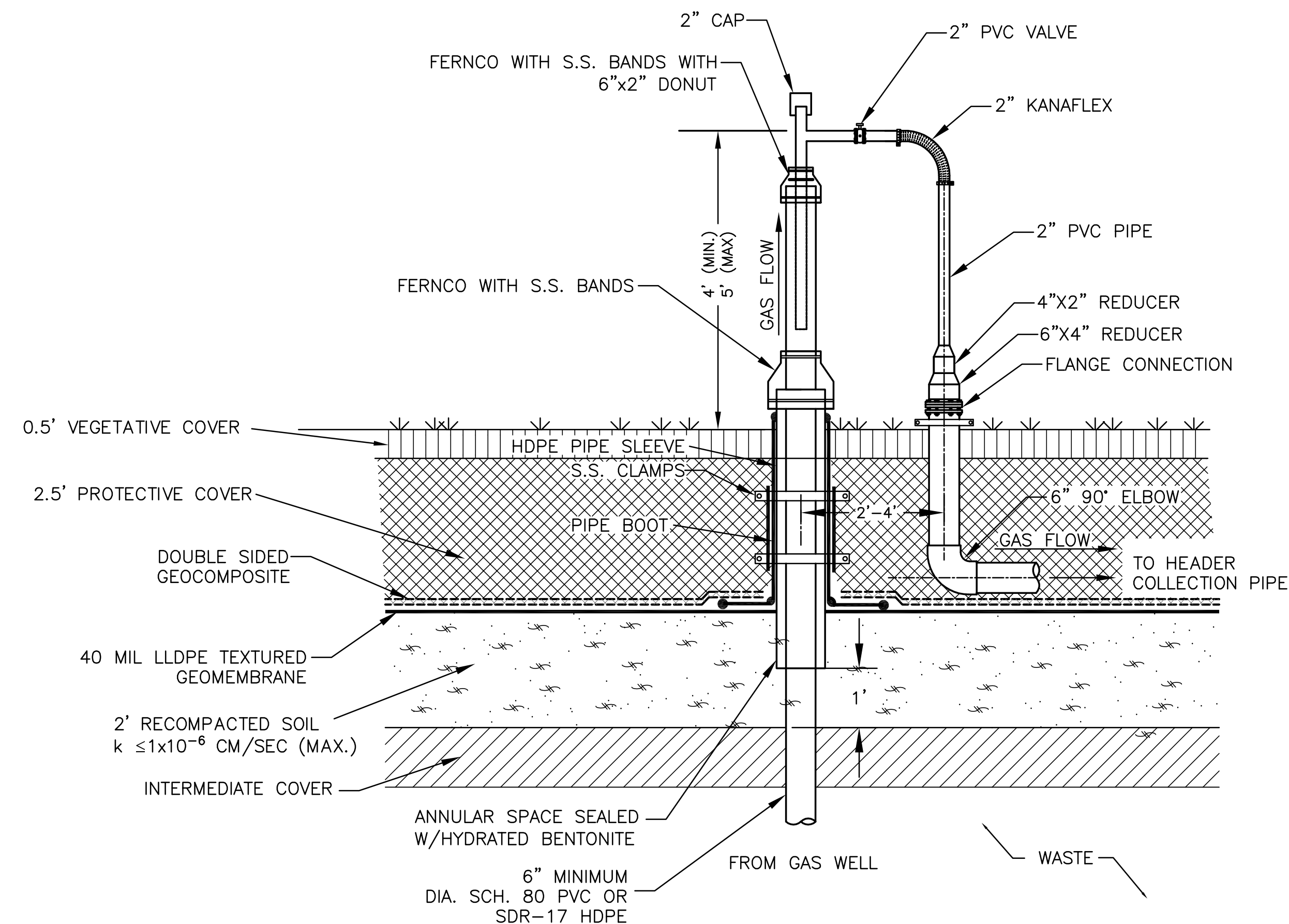


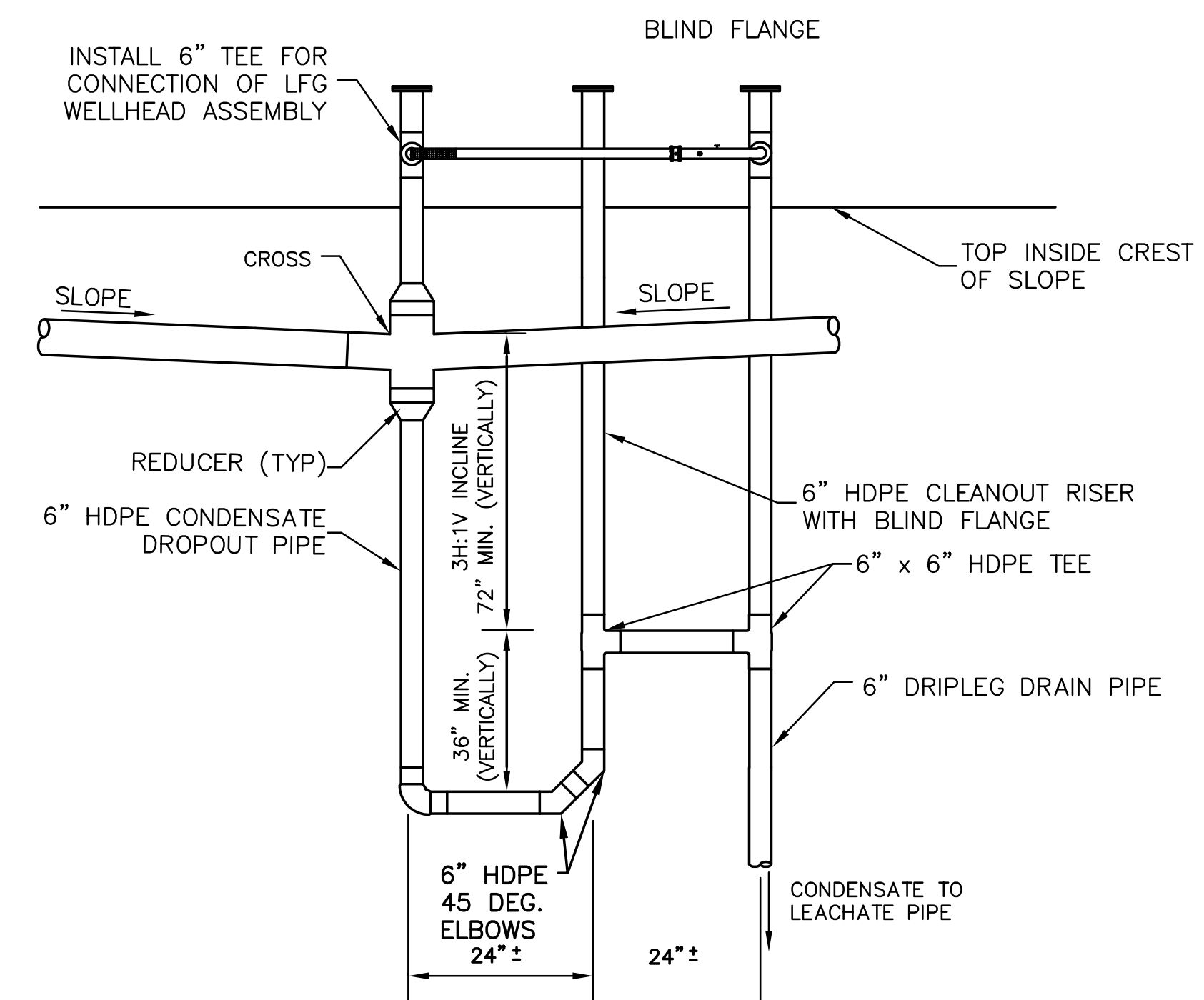
**1**  
**D15** TYPICAL LANDFILL GAS EXTRACTION WELL  
NOT TO SCALE



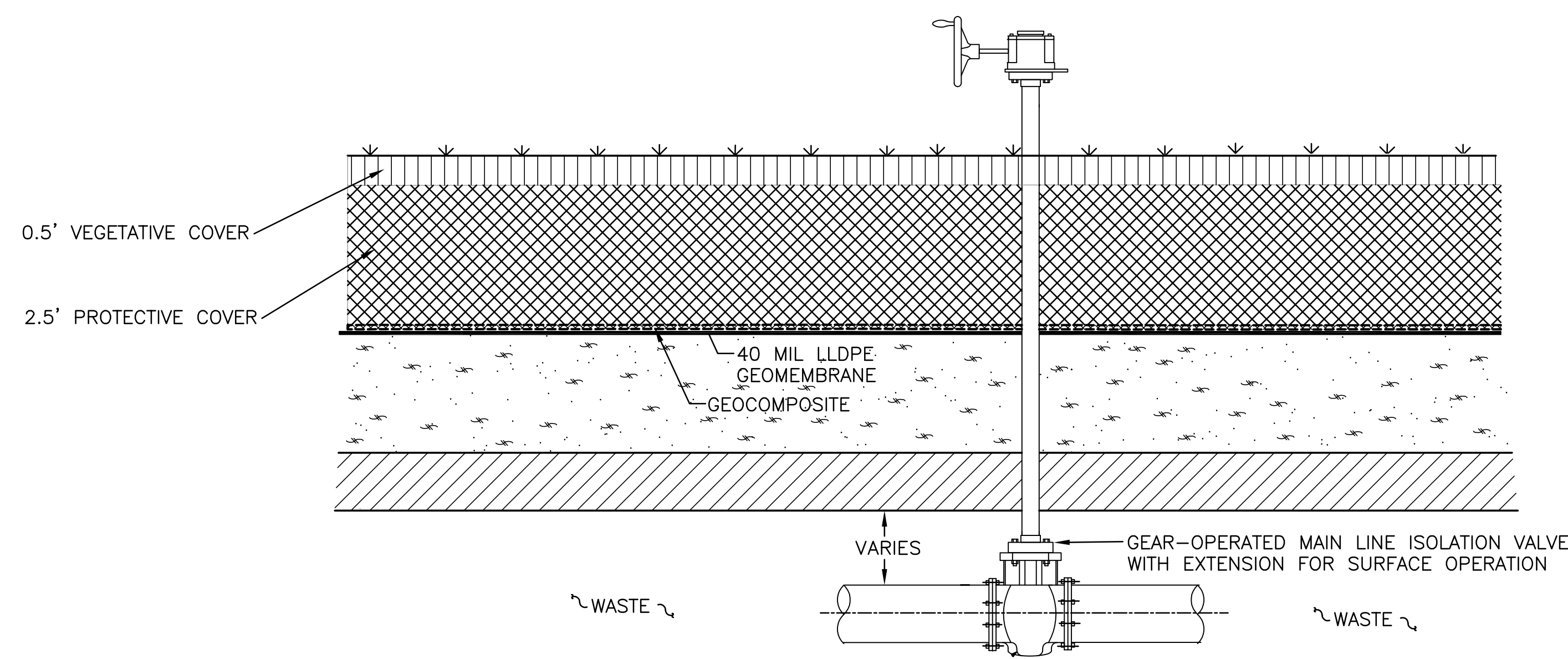
**2**  
**D15** TYPICAL WELLHEAD  
NOT TO SCALE

**NOTES:**

1. WELLHEAD MAY BE SUBSTITUTED WITH AN APPROVED EQUAL.
2. LANDFILL GAS PIPING MAY BE INSTALLED ABOVE OR BELOW THE FINAL COVER GEOMEMBRANE.



**4**  
**D15** TYPICAL INCLINED CONDENSATE DRILEG  
NOT TO SCALE



**3**  
**D15** TYPICAL VALVE DETAIL

**NOTES:**

1. LANDFILL GAS PIPING MAY BE INSTALLED ABOVE OR BELOW THE FINAL COVER GEOMEMBRANE.

REV. NO.	DATE	DESCRIPTION



VEOLIA E.S. ZION LANDFILL-SITE 2 EAST EXPANSION  
CITY OF ZION, ILLINOIS

LANDFILL GAS MANAGEMENT SYSTEM DETAILS

PROJ. NO.:	122150	DATE:	FEBRUARY 2010
DESIGNED BY:	RDS	DRAWING NO.:	<b>D15</b>
DRAWN BY:	BWM		
CHECKED BY:	RDS		
APPROVED BY:	DAM		
			15 OF 22 SHEETS