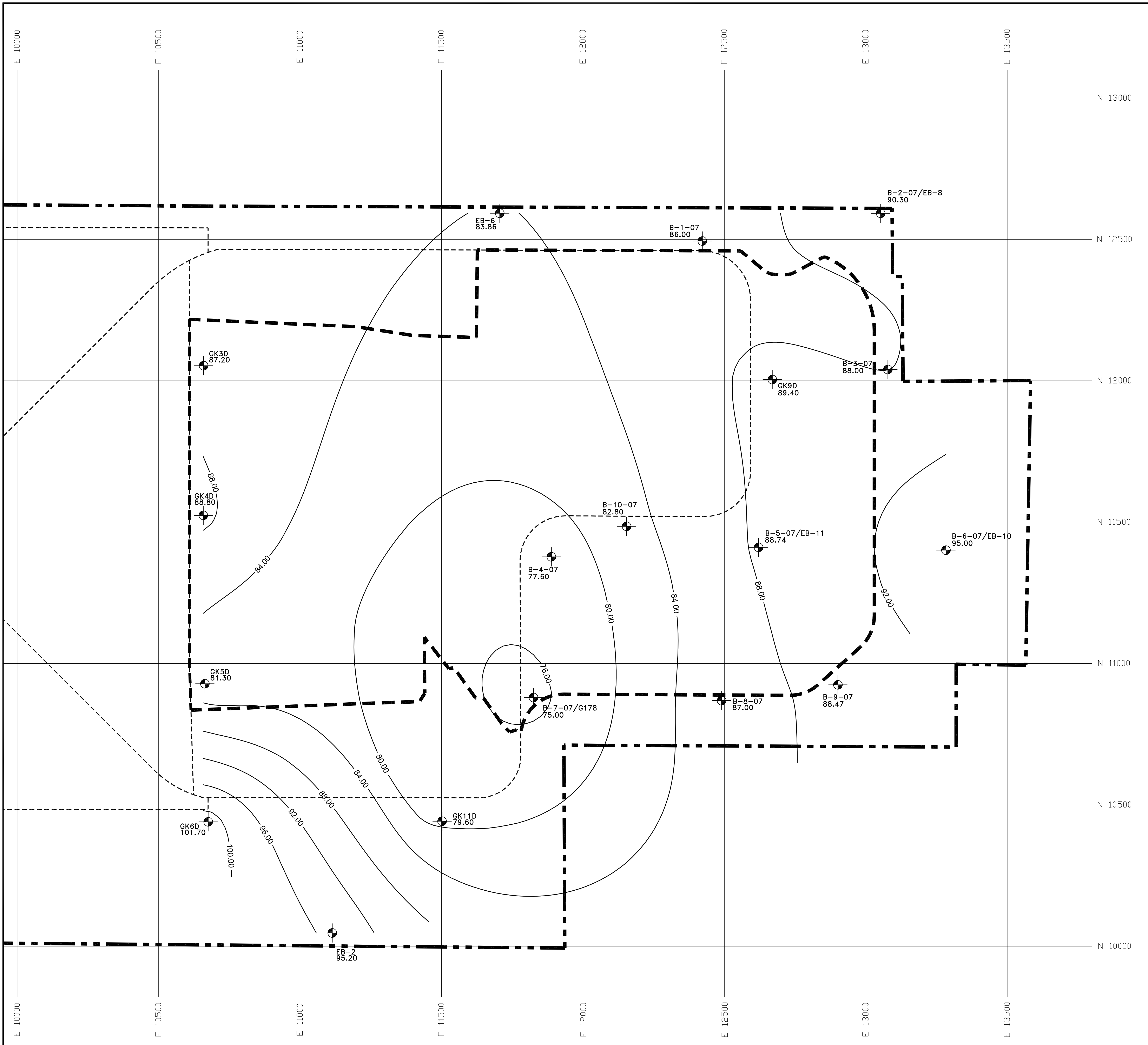


**LEGEND**

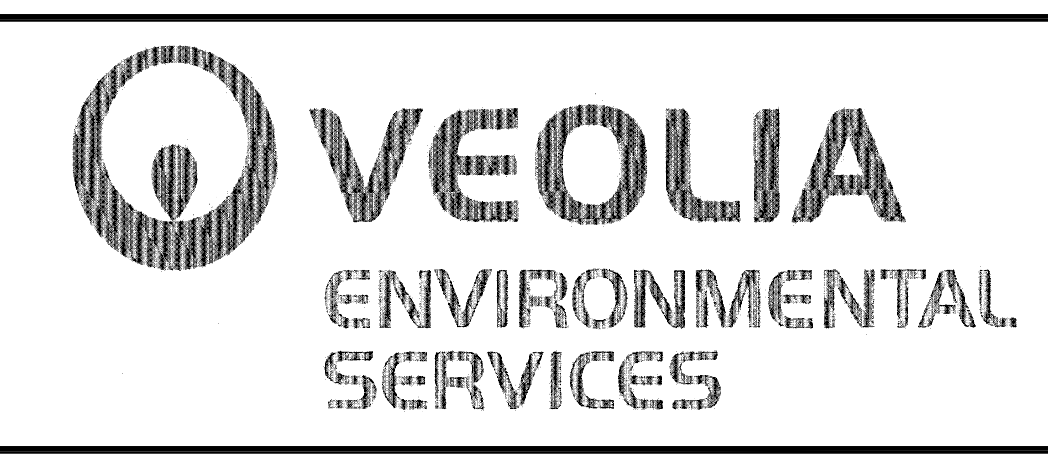
- APPROXIMATE PROPOSED FACILITY BOUNDARY
- PROPOSED EXPANSION WASTE AREA
- EXISTING PERMITTED LIMIT OF WASTE AREAS
- 88.00 INTERPOLATED GEOLOGIC UNIT THICKNESS CONTOUR
- B-2-07/EB-8 90.30 BORING LOCATION WITH THICKNESS OF WADSWORTH FORMATION



**NOTES:**

1. SEE BORING LOGS FOR ELEVATIONS AND COORDINATES.
2. CONTOUR INTERVAL = 4 FEET.
3. THICKNESSES ARE INTERPOLATED BETWEEN LOCATIONS. GROUND SURFACE ELEVATIONS BETWEEN BORING LOCATIONS MAY REDUCE OR INCREASE THE THICKNESS OF THE WADSWORTH FORMATION.
4. THE THICKNESS OF THE WADSWORTH FORMATION ASSUMES PRE-LANDFILL CONDITIONS AND INCLUDES DISCONTINUOUS LENSES OF INTRATILL SEDIMENTS, WHICH ARE CONTAINED WITHIN THE WADSWORTH FORMATION. ONLY CONTINUOUSLY SAMPLED BORINGS WHICH PENETRATED THE ENTIRE THICKNESS OF THE WADSWORTH FORMATION WERE USED TO PREPARE THIS DRAWING.
5. THE COMPLETE PROPOSED FACILITY BOUNDARY IS NOT SHOWN ON THIS DRAWING, FOR A FULL PROPOSED FACILITY BOUNDARY DESCRIPTION REFER TO APPENDIX D.

REV. NO.	DATE	DESCRIPTION



**VEOLIA E.S. ZION LANDFILL-SITE 2 EAST EXPANSION**  
**CITY OF ZION, ILLINOIS**

---

**ISOPACH OF THE WADSWORTH FORMATION**

PROJ. NO.:	122150	DATE:	FEBRUARY 2010
DESIGNED BY:	MNF	DRAWING NO.:	<b>G21</b>
DRAWN BY:	PEL		
CHECKED BY:	DJD		
APPROVED BY:	DAM		
			21 OF 28 SHEETS

T:\AutoCAD\Projects\122150.dwg 1/21/2010 4:21:05 PM CST